



restoring tallgrass prairie, savanna and woodland remnants in southern Ontario...

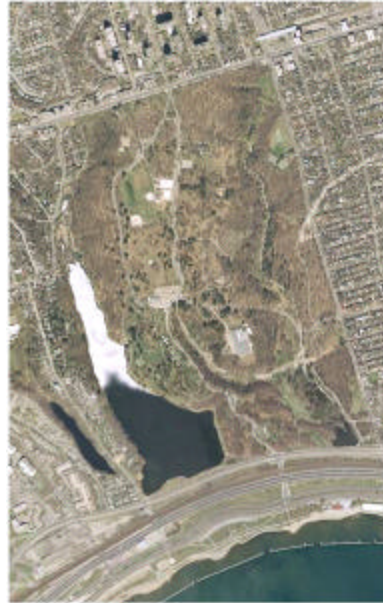
the high park  
experience

vojka miladinovic



## High Park

- Total area: 160 ha
- Ponds: 24 ha
- Natural areas: 79 ha
- Developed areas: 57 ha



2/27/2006

3



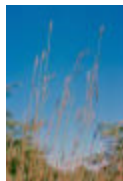
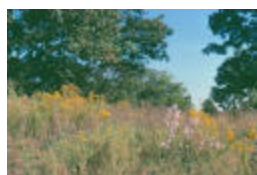
## High Park is Home to:

- 1 nationally rare vegetation community (Dry Black Oak - White Oak Tallgrass Woodland)
- 62 provincially and regionally rare plant species
- 23 regionally uncommon plants
- 53 current breeding birds
- 7 butterflies of conservation concern
- 19 species of mammals

2/27/2006

4

## Black Oak Savannah and Woodland



2/27/2006

5

## Losing biodiversity



Establishment of non-native species and maintenance of turf grass prevented the regeneration of indigenous vegetation and caused dramatic decline in biodiversity

2/27/2006

6



## First Steps

Several sections of the shoreline were naturalized with plantings

The City initiated a test plot program aimed to explore the best practices for restoration of the Park's Black oak Savannah



2/27/2006

7



"To protect nationally significant black Oak woodland and savannah and other associated plant and wildlife features through research, restoration and active maintenance management."

([www.toronto.ca/trees/ravines](http://www.toronto.ca/trees/ravines))

2/27/2006

8

## Prescribed Burns

The City conducted six operational prescribed burns since spring 2000.



2/27/2006

9

## The Effects of the Prescribed Burn



2/27/2006

10

## Controlling Invasive Species



2/27/2006

11



2/27/2006

12



2/27/2006

13



2/27/2006

14

## Re-establishing Native Plant Communities

From 2000 to 2004 the Restoration Crew planted a total of 17255 native plants (821 trees, 2675 shrubs and 13759 herbaceous plants).



2/27/2006

15

## Monitoring

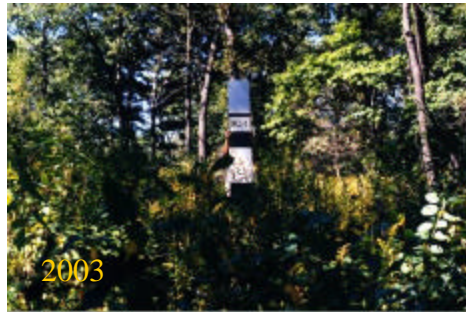
Thirty-five photo monitoring plots established.

The information that is collected will help to document changes on these specific locations over the years.



2/27/2006

16



2/27/2006

17

## Volunteer Contribution

High Park Community  
Advisory Council



2/27/2006

18

Did it work?



2/27/2006

19



2/27/2006

20

	Decreased	Increased
Shrub Cover	<ul style="list-style-type: none"> <li>o Buckthorn</li> <li>o Honeysuckle</li> <li>o Black Cherry</li> <li>o Choke Cherry</li> </ul>	<ul style="list-style-type: none"> <li>o Sassafras</li> </ul>
Canopy Cover	<ul style="list-style-type: none"> <li>o Black Oak</li> </ul>	
Understorey Vegetation	<ul style="list-style-type: none"> <li>o Litter</li> <li>o Festuca</li> <li>o Garlic Mustard</li> <li>o Blueberry</li> <li>o Penn Sedge</li> </ul>	<ul style="list-style-type: none"> <li>o Skyblue Aster</li> <li>o Sandbank Sedge</li> <li>o Common Tick-trefoil</li> <li>o Pale-leaved Sunflower</li> <li>o Canada Goldenrod</li> <li>o Buckthorn</li> <li>o DSV</li> <li>o Sassafras</li> </ul>

2/27/2006

21



The City of Toronto  
Parks, Recreation and Forestry  
Urban Forestry Services

[www.toronto.ca/trees](http://www.toronto.ca/trees)



2/27/2006

22



2/27/2006

23

The City of Toronto  
Parks and Forestry  
Urban Forestry Services



Thank you.



Any questions?

[www.toronto.ca/trees](http://www.toronto.ca/trees)

2/27/2006

24