

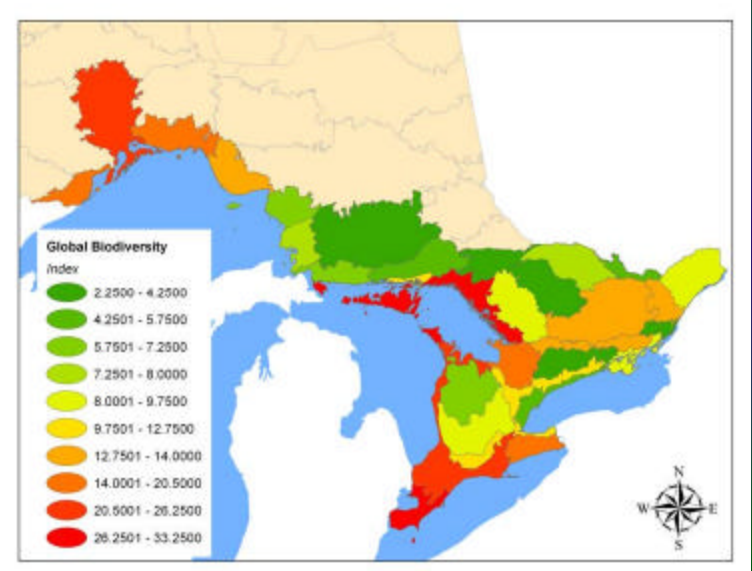
2005 Tallgrass Prairie & Savanna Forum Ecosystem & Species Recovery Action



Strategic Land Securement for Tallgrass Prairie
& Savanna Remnants

James Duncan, Program Manager,
Southwestern Ontario
The Nature Conservancy of Canada

Global Biodiversity Priority Index for the Great Lakes Region of Ontario



Conservation Risk Index for the Great Lakes Region of Ontario (habitat lost: habitat protected)

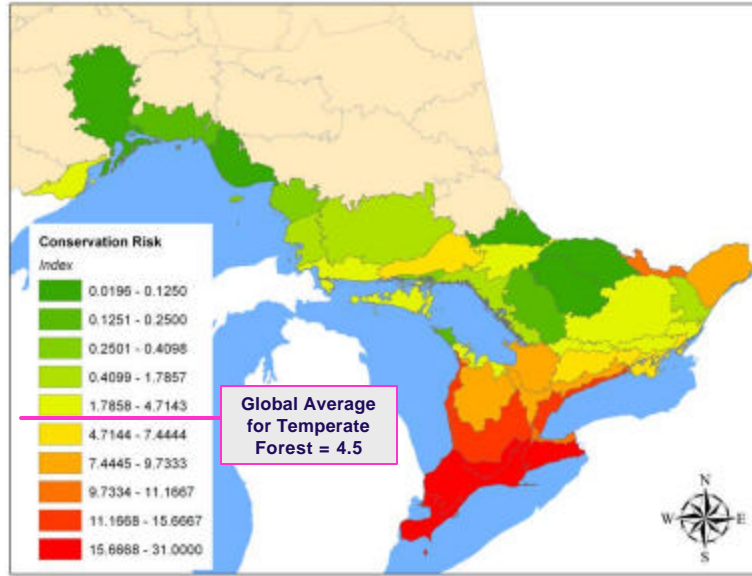
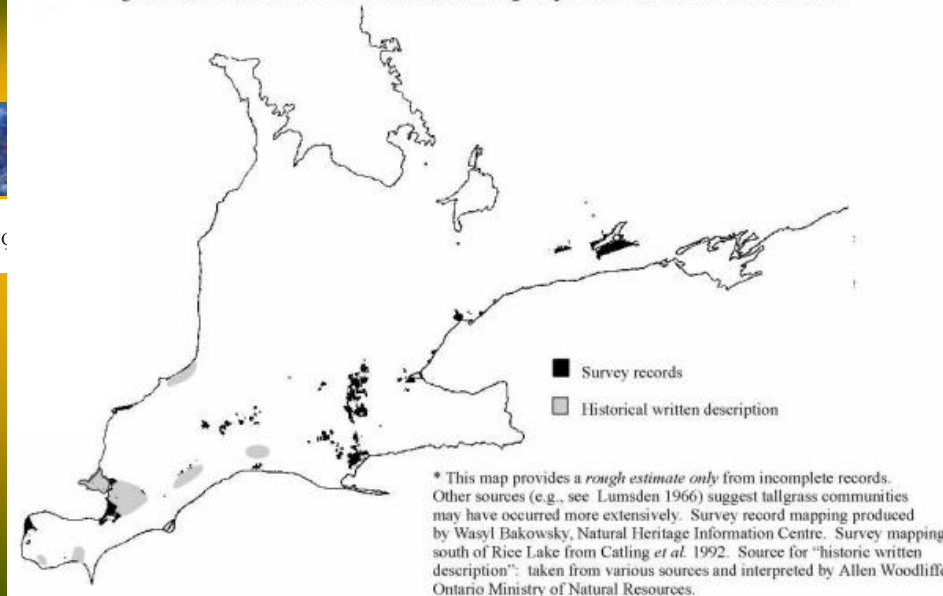
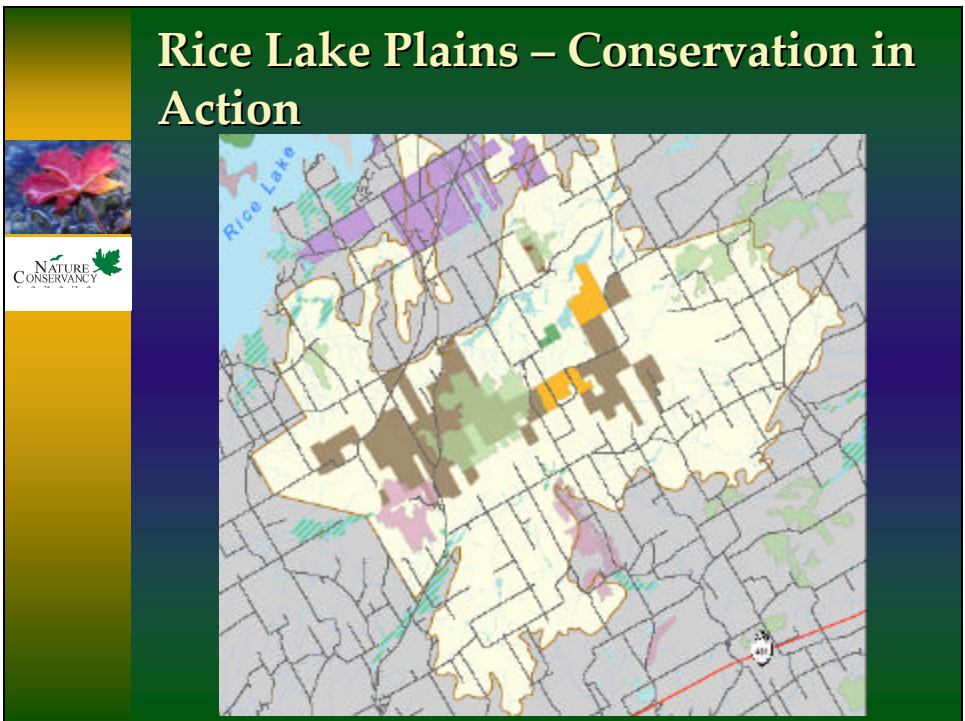
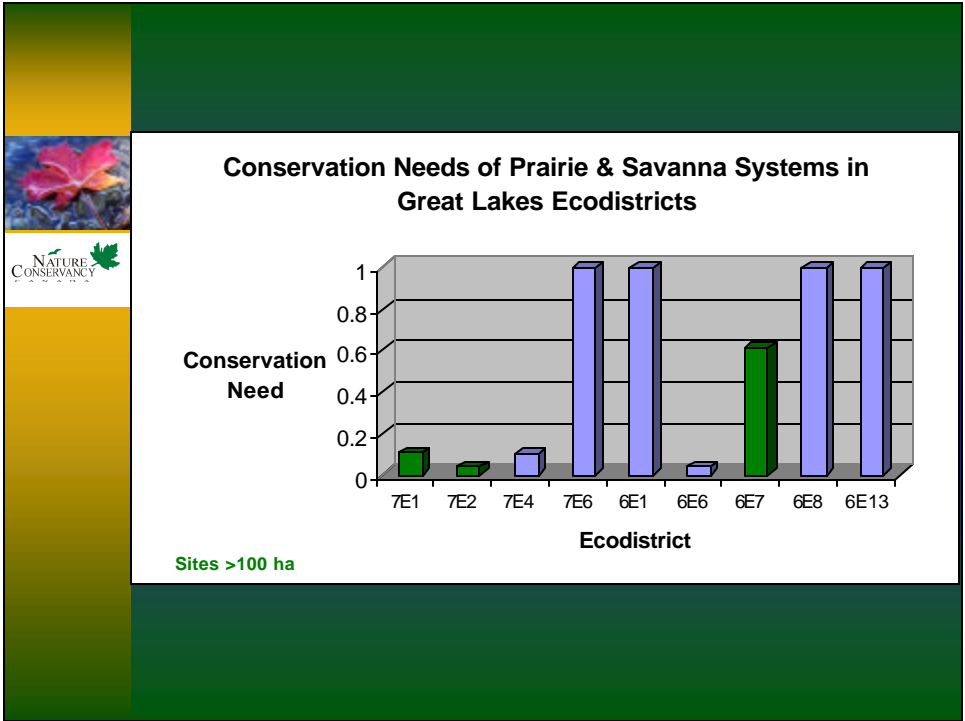
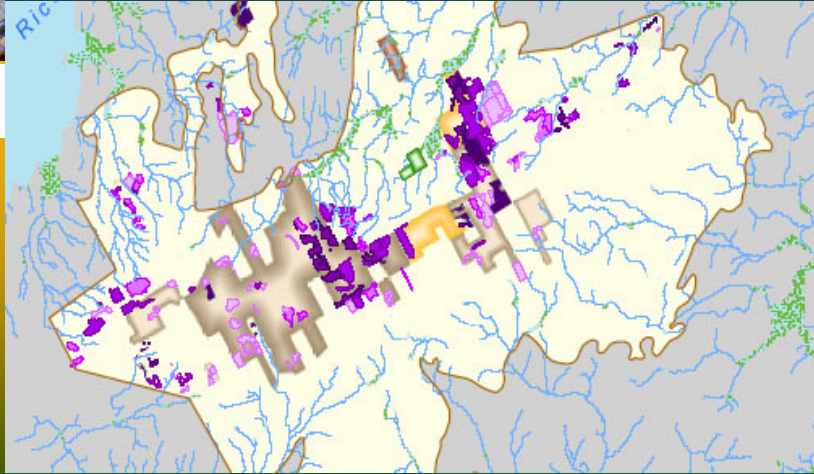


Figure 1: Estimated minimum* historical extent of tallgrass prairie and savanna in southern Ontario

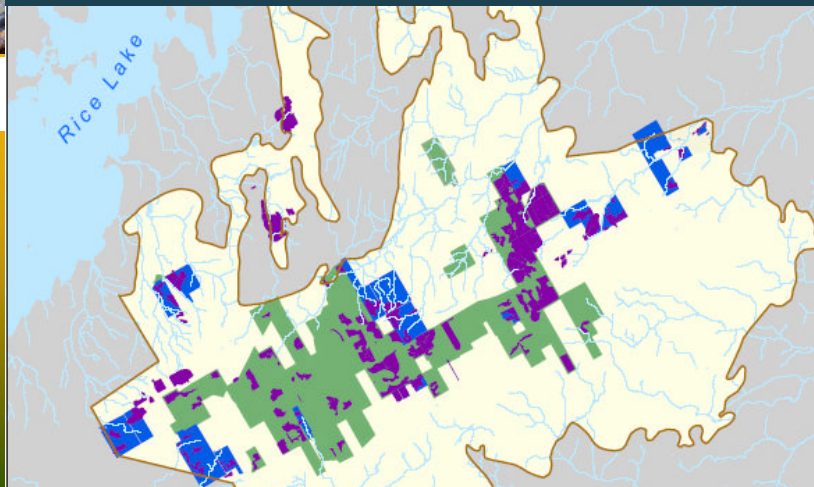
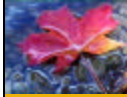




Savanna & Tallgrass Areas



Priority site identified on private land (focus properties) and County Forest (public land stewardship properties).



Land Protection Strategy



In designing a Land Protection Strategy we must ensure that we:

- Focus on priority lands
- Ensure ability to restore and manage existing prairie and savanna
- Increase size and connectivity

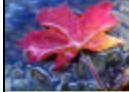
Threats to Prairie & Savannahs



- Succession of savanna and prairie to forest (100%)
- Invasive Species (70%)
- Incompatible Recreation (motorized vehicles) (30%)



What are the Tools?



- Fee Simple Acquisition:
 - Purchase
 - Land donation

What are the Tools?



- Conservation easements:
 - Purchase
 - Donation

NCC's BHAG for the Rice Lake Plains 'the largest and best quality Oak Savanna ecosystem in North America.'

